

A Pair of Christmas Fairs

Two Christmas Fairs in two days sounds like too many – but it wasn't! Both fairs were extremely well attended and everyone seemed to be having a very good time.



The school fair was full of parents and children, of course, and there were some delightful stalls. T-shirts displaying fine drawings, Christmas gifts, decorations, sweets, a luscious looking soap stall and many more.

Topcliffe Playgroup's Nearly New Sale

The Nearly New Sale held at the Village Hall on Saturday 16th October was a great success and we managed to raise £300 for Playgroup, which will be used for new resources for the children.

We would just like to say how much we appreciated the support of all the volunteers who helped out on the day, without them the event could not have taken place. Also, the generous donations of cakes, biscuits, etc which went down a treat.

Thank you to all who supported us!

www.Topcliffe.net

Keep up to date with Parish information, meeting minutes, a colour version of The TATtler and all the pictures of Topcliffe and the surrounding area.

The TATtler



At the village hall, Vanilla Pod Bakery was understandably almost sold out by 3.15. The Christmas cards made by the school children, were selling well and were a good bargain compared to other charity cards. Fair Trade had a popular stall and there was a diet-busting sweet stall providing a colourful display.

All this shows that, at the festive season, you can never have too much of a good thing.

Candlelit Christmas Concert

Queen Mary's choir is giving a Candlelit Christmas Concert on Saturday December 4 at 7pm. Tickets can be bought on the door and cost £7, £5 concessions. Proceeds will be donated to the Children's Society and Church. Refreshments will be served.



A Chilled Topcliffe

www.Topcliffe.net

Open Afternoon at Topcliffe School

Topcliffe pupils celebrated improvements to their school by holding an Open Afternoon on Thursday October 21.

Facilities enhanced include a more accessible library, a hygiene room, complete refurbishment of the kitchen, extra storage for Foundation Stage, a room and toilet for staff and the re-organisation of the office space. Work for the children throughout the term has revolved around the improvements linked to local history projects. The Open Afternoon was the conclusion of their achievements.

The children invited John Graham to officially open the new facilities, as they have used his book, "The Millenium Book of Topcliffe" to inspire their studies and source information.



The school has links with Le Cateau Primary School, Catterick Garrison and the day also provided an opportunity for children with very different backgrounds to come together.

Mrs Wendy Shepherd, Headteacher

**Just a reminder that
dogs are NOT allowed
on the playing fields
in Asenby and Topcliffe!**



Yummy Christmas Ideas from The Vanilla Pod Bakery

Make your festive period more exciting with some seasonal treats!

As the festive period is upon us, we have been having lots of fun creating some new Christmas inspired cupcakes and cakes. Hopefully you will enjoy them as much as we did testing them! Our festive flavours are Ginger & Cinnamon, Coconut Snowballs, Cranberry & White Chocolate, Vanilla & Brandy Butter and Spiced Carrot Cake. All of which

Thanks so much to you all

I would like to thank everyone who came to The Swan for my surprise farewell 'do'. I really appreciated seeing all of you and receiving my BIG signed card. It was especially touching to have Topcliffe's D&S correspondent present to both report and take a memorable photo of Anne-Marie and myself.

Thanks also to the Village Hall committee for the beautiful flower card you sent me. The flowers put a big smile on my face soon after we moved here, when I was feeling particularly lonely.

Ange Hook



Ange was given a good send-off by her many friends at a party in The Swan. No doubt we can soon look forward to photos of our foreign correspondent gathering news from various hostleries in Malton.

come decorated with either your favourite Christmas character or glittery Christmas trimmings!

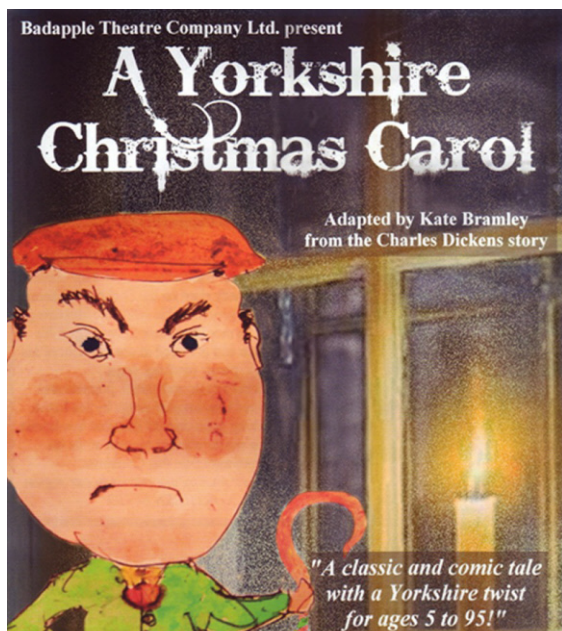
As the bakery is becoming more established, we are now offering a wide range of yummy treats as well as our popular cupcakes and cakes. Some of which include flapjacks, brownies, tiffin, Yorkshire parkin, mince pies and sticky gingerbread to name but a few!

Say "Merry Christmas" to your colleagues, clients or your children's teachers with a Gift Box of cupcakes. Or as an alternative Christmas present, why not treat your loved ones with a Gift Hamper of delicious homemade baking. Any of the above products can be included your Hamper.

Make sure your Christmas feast ends on a sweet note!

**All products are homemade using only the
finest ingredients, locally sourced wherever
possible.**

**For more information and prices please contact
Nicola Knowles on 01845 595988
thevanillapodbakery@yahoo.co.uk**



A Yorkshire Christmas Carol

Written and directed by Kate Bramley, comes to the village hall on Sunday, December 12 at 2.30pm.

Tickets are £8 for adults, £5 for children. Ring 01845 577315 or 01423 339168

www.badappletheatre.com

The play, performed by Bad Apple Theatre, is inspired by the Charles Dickens' story. There are lots of local stories and carols, puppets and mayhem, with original songs by Jez Lowe.

Bad Apple Theatre brought us the immensely popular *An Honorary Yorkshireman* and *The Land Girls of Yorkshire*.

The Topcliffe Educational Foundation

The Topcliffe Educational Foundation is a charity which makes small grants for the purchase of books, to students who have recently left school and are in their first degree course at university or the equivalent. To be eligible, the student must live in the parish of Topcliffe, which is broadly the area covered by the parish as now constituted together with Marton le Moor.

Time for Me *Amanda Roberts* **The perfect Gift**

Treat your friends and loved ones to a gift that shows you truly care. I offer a range of indulgent massage therapies that pamper and rejuvenate.

For full details and to order Gift Vouchers please call me on 01845 578520 or 07976 943353 or visit my website

www.timeformeholistic.co.uk

Home thoughts from Abroad *(Or the latest news from our foreign correspondent in Malton)*

As promised, here is my first message from distant lands.

I was originally worried that I might not be able to communicate with the locals – apparently known as *Maltesers*. My fears, however, were unfounded since, not only do they seem to understand me, but it is also safe to remove my oxygen mask and breathe freely of their air.

I am unaccustomed to some of the sights in town, such as *Boyes*, *Morrisons* and *The Yorkshire Trading Company*. I shall endeavour to acquaint myself with them thoroughly, in the name of scientific research, of course.

Upon close inspection of the local weekly newspapers, I learnt the *Maltesers* are subject to the same 'local' information as the Topcliffites. Much to my surprise, that old chestnut *Allerton Waste Recovery Park* is almost as newsworthy here as it is back there. Just when I thought it was safe to come out of the water....sigh.

Disappointingly, new phone line technology here must be much less advanced than that of Topcliffe. The installation date for our phone keeps getting cancelled or changed with the result that after living here since October 21st, we are still without either a phone line or Internet; we don't even have a definite date for when the install will take place. Hopefully, by the time the next Tattler is due out, we'll be online once more.

Missing you already.

Ange Hook

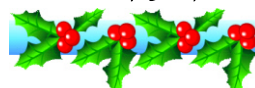
The Charity's income is fixed and limited, therefore the value of any single grant will depend not only on the funds available to distribute but also on the number of successful applications.

Applications are sought in September/October and the Trustees meet in December to approve grants. Students who have received grants in previous years will automatically receive an invitation to apply for 2010.

Anyone seeking further information, wishing to apply or questioning their eligibility to apply should ring Geoff Hall on 01845 578324.

Surgery Hours **Christmas & New Year**

Topcliffe surgery will be closed
Monday 27th, Tuesday 28th December
and Monday 3rd January.



Kate and Wills were Virtually BORN in Topcliffe

(It's Official – well, almost)

There'll be some amongst the Tattler's readers who will feel they have already heard quite sufficient about the royal good news. Yes, that announcement from the palace that the future heir to the throne – second in line to be precise – will get hitched sometime in the spring or summer of 2011.

The problem is that the media feast off news like this. One newspaper I read said, rather stupidly, in my opinion, that the public "are agog with delight" and another (the Evening Gazette, Middlesbrough) went to ridiculous lengths to establish local roots for the bride to be. It went back to Kate Middleton's great, great, great-grandfather who, it proclaimed, was a miner from Guisborough. Well, maybe that's true but does it matter?

Well yes, of course it does. We all need our own little piece of William and Kate, don't we?

So I set out to find out what claims Topcliffe might make in this affair. And, the more you think about it the more it is clear that Topcliffe has many connections – particularly to Royalty, if not to Kate – and these should make us all feel that much more personally linked to the forthcoming event.

Here's just a few links:

- In 948, the states of Northumberland assembled here and took the oath of allegiance to King Edred, the west Saxon.
- Henry Percy, 4th Earl of Northumberland and, at the time, Lord Lieutenant of the county was killed here in 1489 by the locals when he proclaimed a poll tax on behalf of Henry VII. That precipitated the Yorkshire Rising, which probably didn't make us very popular down in the Royal Courts.
- Thomas Percy, the succeeding Earl, in 1569, took up arms against Queen Elizabeth, and was nearly taken in his house – now the site of the Maiden Bower. He was afterwards executed in 1572.
- We must have been forgiven for our rebellious streak as in 1603 King James 1 stayed in Topcliffe on his way from Scotland to London.
- Then in 1647 a ransom of £400,000 was paid at the Toll Booth, to the Scots, in exchange for King Charles 1.

Then, of course, there are the less well documented relationships that can be made to cement the royal links. Take the church, for example, it is fairly certain that Prince William saw its tower whilst flying

past at some point and it's more than likely he will marry in a church!

There's the Dovecote in Dovecote Mews: we all know the royals love pigeons don't we? Well, the Queen Mother did. And there's The Beeches in Front Street, which is a jump at Aintree and we all know how much the royals like racing. Well, the Queen Mother did. Oh, and there's The Swan. The Queen owns all the swans in England which makes her a possible landlady along with John and Carrie-Anne. She's almost the Peggy Mitchell of Topcliffe in fact.



Bearing in mind this myriad of historical fact and unlikely invention, maybe we should invite the royal couple to get married here in St Columba's and to have their reception in the ever popular Topley Suite?

By the way, John Graham's book – the Millennium Book of Topcliffe – has its uses after all and in all sincerity, I wish Prince William and Kate best wishes for their special day.

Doug Allan

Greetings from John and Carrie Anne

The landlords of The Swan would like to say a big thank-you to all their customers, who have supported them with all their fundraising activities throughout the year.



The Swan will be open from 11.30am – 2.30pm then 8.00 pm to midnight on Christmas Day.

On Boxing Day, opening hours will be 7pm – 1pm. This will be ticket only.

A Very Merry Christmas and a Happy New Year to all The Swan Customers!

In Quest of Silence

Having been forced to use the Internet in the local library until my phone line is connected, I have made a sad discovery. In Malton, the days of being able to retire to the library to enjoy periods of complete silence, interrupted by nothing but the whispered hush of the librarian, are apparently long gone. Instead, especially on Saturdays, the computers have been virtually taken over by the town's scallies.

Last Saturday, the scally section was filled with loud kids. Sat on one girl's knee was a lively baby who took great delight in thumping the keyboard. Maybe he was attempting to type out the complete works of Shakespeare in Morse code. Who knows? He was undeterred by the fact that the girl holding him was determined to sing along to every song on her iPod. She was wearing headphones, which made her oblivious to the fact that her voice didn't actually match the one she was trying to copy.

While all this was going on, there was someone else beside me looking at pictures of clothes on eBay and trying to advise her sister, via mobile phone, as to which dress to buy from there. And why did one girl, who was obviously typing messages on Facebook, feel the need to read aloud every message she sent and received.

Thank goodness my home phone will be connected soon. I long for the days when I can sit at my own computer, where the only background noise is that of the dog snoring.

Ange Hook

ASENBY NEWS

So Christmas is upon us. We are SO excited that this year Crab Manor has kindly offered us their conservatory in which to hold the annual Mulled Wine get-together! What a start to Christmas that will be! Look out for more details on fliers and posters.

After missing the last Tattler, we need to cast our minds back to the sun (yes it did shine occasionally this summer!) Many thanks for those who supported this year's Barbeque. We raised just over £350 which will continue to allow us to mow the grass, mend the equipment and keep things safe. Thank you. The repaired see-saw should be in use soon!

As always we are on the look-out for new things to make our village even better, so if you have any ideas or want to join our small (but growing!!) and friendly committee, you will be more than welcome!

Emma McCormick

Topcliffe Playgroup Extended Opening Hours

Due to the popular demand of the sessions, Topcliffe Playgroup has extended its opening hours!

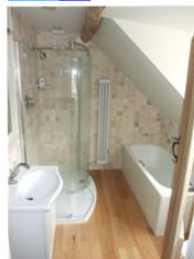
The new opening hours are:
Monday and Friday 9.00am – 12.30pm
Tuesday, Wednesday and Thursday
9.00am – 3.00pm

Please call Jessica Robertson, Playgroup Leader on 01845 578959 for more information on available sessions for your child.



**walker
renovations**

offer a complete service,
all our work is carried out by
professional time served
tradesmen to the highest
possible standard



Kitchens

Bedrooms

Extensions

Bathrooms

Conservatories

Conversions



Sun Lounges

Roofing

Patios

Doors

Windows



certass

01845 577612 07801 189162

walker.renovations@virgin.net

14 Jamesville Way Asenby Thirsk YO7 3QP

NORTH YORKSHIRE HEATING

Gas, OIL, LPG,
& SOLID FUEL APPLIANCES
Installation / Service / Repair

• Boilers • Fires
• Central Heating • Stoves

Call Steve Humphreys on

01845 597865
or **07730 303923**



Topcliffe Parish Council News

The Topcliffe Parish Council wishes to say thank you and goodbye to the departing clerk Angela Hook after over four years of diligent and valuable service, and wish her well at her new home in Malton. Ange will be keeping in touch via e-mail once her new line is put in. The council also welcomes her replacement Mrs Isobel Peters as the new clerk. A few thank you notes to Tony Bruce and Jim Brame for auditing the accounts; Malcolm Morley and Jim Binks for assistance with the mowers; Ray Parkin for repairs at the Sheepwash and other practical assistance; and to John Heidstrom and Dave Bowman for repairs to store shed and benches - thank you! As the festive season approaches, the council wishes all residents a Merry Christmas and a Happy and Prosperous New Year but above all keep safe.

A few notes:

Drains and smell

The problematic and periodic problem with obnoxious odours seems to have been alleviated by Yorkshire Water repairing the faulty sewer near the Toll Booth; apparently this has been damaged for years, probably since it was first put in. Any further events, please record date and time and forward to the parish clerk, Isobel Peters.

Trees on Long Street

The council is looking to replace some of the diseased trees that were removed last year. They may not be in the same position, due to Highways safety concerns. We are awaiting a new NYCC policy.

Parking

Please do not park on the grass verges on Long Street, especially near the surgery, as this destroys the verge. Parking on the road creates a chicane and contributes to speed control. A recent incident at the school highlighted the need for parents to be aware of others when parking. On this occasion, no injury occurred but it was a close shave. On Long

Street, please do not park on the pavement as this restricts pedestrian access.

Playing Field

Parking on the playing field is generally not permitted except for authorised vehicles. The council, however, recognises the limited space on Winn Lane and therefore parking may be permitted near the entrance to the playing field and close to the hedge but **not** on the sports pitch. Parking is subject to common sense and suitable ground conditions. Parking close to the bowls club for pick up and drop off of heavy items is restricted to suitable weather and ground conditions and parking must be as close to the wire fence as possible. Do **not** cut across the sports pitch.

Path clearing

As winter approaches and in the face of budget restrictions, North Yorkshire County Council and Highways will not be able to clear as many roadways in future. Self-help is now the order of the day. Highways have issued guidance on the self-help practice of clearing pathways adjacent to owners' premises. Residents should not be concerned about legal action as this is part of the 'Big Society' agenda. Start early as fresh snow is easier to clear. Clear a central path and remove spoil to the sides. Do not use water as this will create black ice. Use domestic salt (about a teaspoon per sq m.) Use sand/grit for grip.

Public Information

Emergency Orthopaedic and Trauma surgery at the Friarage.

In order to improve 'patient outcomes', the NY and South Tees NHS Trust has announced that all patients requiring urgent surgery at A&E at the Friarage will be transferred to the James Cook University Hospital for treatment. Patients will be returned to the Friarage once stabilised. Routine surgery will continue to take place at the Friarage.

Garry Key -Topcliffe Parish Council Chairman



A Turner Electrical

Sowerby – Thirsk – North Yorkshire

Tel: 01845 522364 / 07726 456 536

agturner@aturnerelectrical.co.uk

Electrical contractor. We offer a friendly and reliable service and turn up on time! We are interested in work, not excuses! Free quotations, all job sizes considered



Proprietor: Andrew Turner B.Eng (Eng) Hons

A Story of Rains and Drains

On a recent Sunday afternoon after what seemed like forty days and forty nights of continuous rain, but was in fact about six hours, Front Street yet again flooded. And yet again traffic swept through the filthy water; the drivers indifferent or unaware that they were causing waves of almost biblical proportions to invade Sunnyside. The council was summoned to the rescue and two workers in Guantanamo-coloured outfits appeared in their drainmobile.



The workforce seemed a tad under-prepared, having eschewed modern technology for a brush and a shovel. However, to their credit, the Guantanamo men located the drain (they may well have attended to its vagaries before) and proceeded to lift the lid and wiggle the brush in its murky depths, replace the lid, get back in their vehicle and drive off. It was wondrous to behold. The water of course remained for a while although, in the way that your blocked kitchen sink will do after you attack it with a plunger, it reluctantly started to slowly ooze away. And of course, the rain had stopped which helped.

There has been much grumbling about the tendency of Front Street to flood at the first sign of heavy rain and now that we have government cuts to contend with, perhaps "prevention is better than cure" should be the way forward rather than "time and a half on Sundays."

Book Request

I am writing on behalf of a friend of mine who wishes to buy a book called 'The Parish Churches in the ancient Vale of Mowbray' by Keith Surgey & David Trotman of Thirsk.

The reason I am writing to you is because I know that some time ago other friends of mine managed to buy one for £10 from a lady who lives in Topcliffe who at the time had a garage full of them for sale, proceeds to Topcliffe church funds. Do you happen to know this lady and if so know if she still has any of the books available?

Ken Urwin (Please contact tattler@topcliffe.net for email)
Middlesbrough



CL & V Parker & Sons
Carpentry & Joinery Contractors
Bespoke Joinery
Cabinet Making
General Building Work

Les Parker
Mobile: 07802 456127

FENSA
Reg No. 16623

81 Long Street · Topcliffe · Thirsk · North Yorkshire · YO7 3RL
Tel/Fax 01845 577402

Is your house cold?

Does it cost too much to keep warm?

Do you worry about the size of your fuel bills?

Call the Energy Saving Trust
advice centre on
0800 512 012
free from a landline

or
0300 456 2655
local rate from a mobile
www.energysavingtrust.org.uk

YOUR PARISH COUNCILLOR'S

Topcliffe	Asenby
Garry Key (Chairman) Cliff House, Long St. 578900	Peter Palmer (Chairman) Hilltop Farm 578057
David Bowman (Vice Chair) 21 East Lea 577843	Judy Lowe (Vice Chair) Green End Dairy 577911
John Heidstrom 28 Long St 07795 362335	Mel Arkley Thistledhu, 7 Jamesville Way 578728
Mark Bowen 23 Manor Close 07703 040471	Grahame Marsden 8 Jamesville Way 578156
Amanda Jameson-Allen 77 Long St 07944 236595	

Isobel Peters (Clerk)

Tel: 07739 258650 isobelpeters@googlemail.com

Bravo Les Enfants!

To help with their French studies, the children in years 5 and 6 organised a French café recently.



The children were encouraged to dress in French clothing and spent the afternoon preparing the food and dressing the tables in preparation. Croissants, brioche, pains-au-chocolat, fresh coffee and orange juice were on sale.

Peter Wright Painter & Decorator



42 Front Street
Topcliffe

Call him on 577047 or 07742 707101



Anything you'd like to tell us????

I know, we've asked you before to send in your opinions, observations and news and views but very few of you do – in fact, pretty much nobody does. The Tattler is an ideal forum to air your thoughts and rid yourself of those irritating niggles about bins, noise, mess, speeding traffic etc.

So, get thinking then get writing. Far better than blogging and tweeting, The Tattler is just between friends – all eight or nine hundred of them of them.

Snooker Club

We are still looking for members, new and old. Members must be at least 18 years of age.

Membership is due to be paid on September 1st, 2010.



All the parents were invited to sample some traditional French food and the afternoon proved to be a great success.

Not the best thing about owning a dog

The dog bin (a receptacle for dog's poo not the actual dog - though I can't say I've not been tempted) which is currently on the river bank near Topcliffe Bridge, is being removed because Harrogate Council refuses to empty it. And you know what that means.....

Two reminders from Judith Lowe

The Swap Library continues on Tuesday afternoons from 3-5pm at the village hall. It's possible to borrow dvd's as well as books and chatting with friends and neighbours is encouraged.

Also, the ever-popular Burns Night will be held on January 29th. This is always a fab night and you don't need a kilt, and definitely not a sporran, to join in. Tickets will be available after Christmas.

Local Telephone Numbers & Websites

Topcliffe Surgery - 577297

www.topcliffesurgery.co.uk

Friarage Hospital - 01609 779911

www.southtees.nhs.uk

Gas Emergencies - 0800 111 999

www.nationalgrid.com/uk

Police - 0845 60 60 24 7

www.northyorkshire.police.uk

Hambleton DC - 01609 779977

www.hambleton.gov.uk

Harrogate BC - 01423 568954

www.harrogate.gov.uk

HDC Cllr Neville Huxtable 01845 501068

c.llr.neville.huxtable@hambleton.gov.uk

HBC Cllr Chris Brown 01765 640398

c.b.brown398@hotmail.co.uk

Editorial: Vicki Moores / Angela Hook - Tel. 578076: (E-mail: tattler@topcliffe.net)

Production: Charles Collinson - Tel. 578464